

# Postgraduate Programs in Health Administration, Policy and Leadership



**Murdoch**  
UNIVERSITY



**EMMANUEL DEI**

MASTER OF HEALTH,  
ADMINISTRATION, POLICY  
AND LEADERSHIP.

Become  
a **leader** in  
the health  
industry.



*Free your think*

# Study Health Administration, Policy and Leadership

Murdoch Business School offers a 2-year Master of Health Administration, Policy and Leadership (MHAPL), and a 6-12 month Graduate Certificate in Health Administration, Policy and Leadership (GC HAPL).

These pan-University programs provide the key multidisciplinary skills needed to address the complex challenges facing today's health sector. Students have the choice to specialise in administration and leadership; informatics and analytics; or policy and evaluation.

Classes are delivered in flexible formats, designed to fit into a demanding professional life.

## Murdoch Business School

Murdoch Business School embodies the spirit of free-thinking, inclusion and opportunity that underpinned its initial inception. The contributions, innovation, and leadership of the School's more than 20,000 alumni have transformed businesses and communities across the globe.

Our courses, research and community engagement blend together our academic excellence, award winning student experience and strong industry links.

Our programs are designed to support you to develop your business and interpersonal skills, and provide you with opportunities to engage with industry through our placement programs. We draw on our strong network of local and international businesses, public and private organisations to create contemporary 'real world' learning experiences.

## Why study Health Administration, Policy and Leadership?

Health is one of Australia's largest industries and is also WA's largest employment sector. International trends suggest an increasing demand for executives, managers, professionals, administrators and analysts. Graduates will be qualified to seek careers in: pharmaceutical and medical devices firms; health insurers; regulatory agencies; hospitals; integrated care organisations; health ministries; health department; and other governmental agencies, as well as universities and commercial research organisations.

### Specialise your qualification

Masters students can specialise in three areas:

- Administration and Leadership
- Informatics and Analytics
- Policy and Evaluation

### Administration and Leadership

Health administrators plan, direct, organise and oversee the delivery of health and social services in a range of settings, including hospitals and health care organisations. This specialisation provides skills in health administration, finance, accounting, strategic and project management and leadership for future health-industry leaders.

### Informatics and Analytics

Health informatics is a scientific discipline involving the management of health care data, information and knowledge. This specialisation focuses on providing specialised skills in health informatics and analytics, which are essential to navigating the complexity of the healthcare sector, while informing and supporting evidence based decision making, nationally and internationally.

### Policy and Evaluation

Policy analysts are concerned with the development and evaluation of policies to improve the functioning of health care delivery systems. This specialisation focuses on providing skills in health policy and governance, together with health program evaluation and assessment to inform decision making and priority setting in the Australian and international context.

“Murdoch is ambitious, innovative and forward thinking. There are regular opportunities to attend seminars and overseas trips through the Murdoch Business School. The University puts its students first.”

**DONNA GILMOUR**  
(MASTER OF HEALTH ADMINISTRATION,  
POLICY AND LEADERSHIP)



## Are these programs right for you?

These programs are aimed at:

- Established professionals with health care expertise, looking to acquire in-depth managerial and leadership skills to progress in their careers
- Graduates with a Bachelor degree, or equivalent in any discipline (e.g. social sciences, business, medicine, nursing and biology etc.), looking to acquire industry relevant skills to move into the health sector

## What will you get out of the programs?

- An appreciation of the administrative, policy, legal, economic and social challenges of equitable and efficient healthcare delivery
- An in-depth understanding of the interdependence of local, national and international health challenges
- The ability to manage and administer a health organisation, following ethical standards
- The capacity to develop, implement and evaluate health policies and programs
- Analytical skills to apply data sciences to improve health care delivery and financing

### Professional Accreditation

This course is accredited by the Australasian College of Health Service Management and recommended as an approved course by the Royal Australasian College of Medical Administrators.

## Why study Health Administration, Policy and Leadership with us?

### Industry relevant

Our programs are designed with employers' needs in mind. Many units involve current industry experts, representing major Australian health employers, delivering guest lectures. Masters students can acquire professional experience through case study projects, internships and research as well as undertake international exchanges.

### Study intensively and in flexible formats

Many classes are offered online and face to face, on a weekly or in intensive blocks. Any stream within the Graduate Certificate and many units within the Masters can be completed both face to face and online.

### Specialise in your area of preference

The programs offer you the chance to specialise in the areas of administration and leadership; informatics and analytics; evaluation and policy, or to take a non-specialised route.

### Benefit from small and medium-size classes

Classes are taught in seminars and workshops, providing students with the individual care and support they need.

### The Capstone Experience

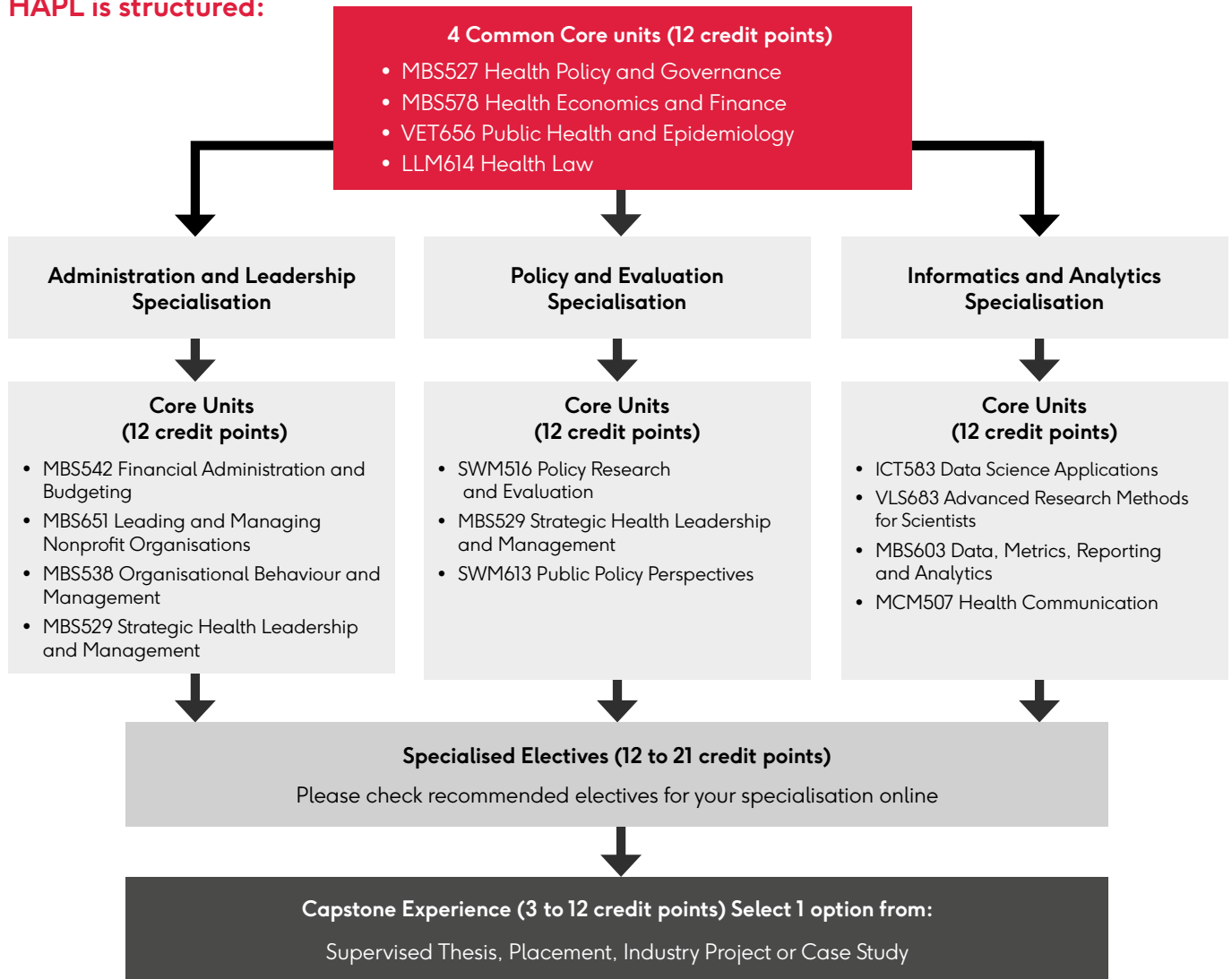
As a Masters student, you will complete your degree with a Capstone experience – a special unit that consolidates everything you have learned in your course. You can choose from a supervised thesis, a research placement, or a real-world policy case study or industry project.

## Key program information

	Code	Duration	Mode of delivery	Admission requirements	Intake periods
Master	M1267	2 years full-time (or part-time equivalent)	Internal (some units are available externally)	<ul style="list-style-type: none"> <li>• A Bachelor's degree (or equivalent) in any field</li> <li>• English competence</li> </ul>	January, May and August
Graduate Certificate	C1136	6 to 12 months full-time (or part-time equivalent)	Internal and external	<ul style="list-style-type: none"> <li>• A Bachelor's degree (or equivalent) in any field</li> <li>• English competence</li> </ul>	January, May and August



## How the Master of HAPL is structured:



## How the Graduate Certificate in HAPL is structured:



Find out more at  
[postgraduate.murdoch.edu.au](https://postgraduate.murdoch.edu.au)

# Industry Speakers

**Angela Alessandri**

Associate Professor  
in Professionalism &  
Clinical Governance,  
University of Notre  
Dame



**Hugh Dawkins**

Consultant



**Dr Simon Towler**

Medical Co-Director,  
Services and Intensive  
Care Unit Staff  
Specialist,  
Fiona Stanley Hospital



**Dianne Bianchini,**

Fellow of the  
Australasian College  
of Health Service  
Management on the  
WA Branch Council



**Paul Forden**

Executive Director,  
South Metro Health  
Service



**Steve Webb**

Senior Staff Specialist,  
Intensive Care  
Medicine,  
Royal Perth Hospital



**Karen Bradley**

Chief Nurse and  
Midwifery, Department  
of Health



**David Ligovich**

CFO, Silver Chain  
Group, WA



**Tarun Weeramanthri**

Deputy Chair of  
PathWest Board



**Kayla Calladine**

Lawyer and Director  
of the Australian  
Department of Health



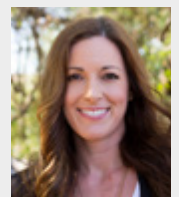
**Christopher McGowen**

Former Executive  
Director, Silver Chain



**Philippa Vojnovic**

Mental Health Strategy  
and Development  
Manager, Anglicare



**Andrea Creado**

CEO, Multicultural  
Women's Centre



**Alain St Flour**

Director Audit and Risk  
(Chief Audit Executive),  
North Metro Health  
Service, WA



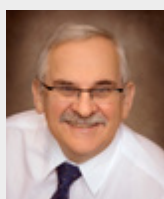
**Nikolas Zeps**

Group Director of  
Research, Epworth  
HealthCare



**Dr Stephen Duckett**

Director of the  
Health Program,  
Grattan Institute



**Mark Slattery**

Consultant



# Key Faculty

Associate Professor  
Khurshid Alam

Associate Professor in  
Health Economics



Renae Desai

Lecturer in Strategic  
Communication,  
Academic Chair  
of Postgraduate  
Communication



Dr Ana Rita Sequeira

Lecturer in  
Health Policy



Associate Professor  
Manzurul Alam

Professor of Accounting



Associate Professor  
Chris Dent

School of Law



Dr Kenneth Yap

Lecturer in Marketing



Professor  
Jürgen Bröhmer

Professor of Law



Dr Yvonne Haigh

Senior Lecturer in  
Policy and Governance



Dr Guanjin  
(Brenda) Wang

Lecturer in  
Information  
Technology



Dr Mieghan Bruce

Lecturer in Veterinary  
Epidemiology



Dr Garth Maker

Senior Lecturer in  
Biochemistry



Dr Moira Watson

Lecturer in  
Management



Professor  
Geoffrey Coombs

Chair Public Health



Dr Megan Paull

Senior Lecturer in  
Management



Professor Steve Wilton

Foundation Chair in  
Molecular Therapy



## Contact

90 South Street, Murdoch Western Australia 6150 | Telephone 1300 687 3624 | Email [study@murdoch.edu.au](mailto:study@murdoch.edu.au)



[facebook.com/murdochuniversity](https://facebook.com/murdochuniversity)



[linkedin.com/school/murdoch-university](https://linkedin.com/school/murdoch-university)



[instagram.com/murdochuniversity](https://instagram.com/murdochuniversity)



[murdochuniv](https://snapchat.com/murdochuniv)



[twitter.com/murdochuni](https://twitter.com/murdochuni)



[tiktok.com/@murdochuni](https://tiktok.com/@murdochuni)

Disclaimer: The information contained in this publication was correct as at November 2020, but is subject to amendment without notice. The University reserves the right to cancel, without notice, any units or courses if the number of students enrolled in these falls below limits set by the University. © 2020 Murdoch University. This publication is copyright. Except as permitted by the Copyright Act no part of it may in any form or by any electronic, mechanical, photocopying, recording or any other means be reproduced, stored in a retrieval system or be broadcast or transmitted without the prior permission of the publisher.

CRICOS Provider Code 00125J | MCO0006334 11/2020